

1. West side - Asa Tracy House, circa 1865.
2. East side - 1859 Jenny Peters, a Negro washer woman occupied the house.
- 2A. East side - Andrew Nord home. There was also a blacksmith shop and shingle mill on south side, 1881-1907.
3. West side - Emil Asp blacksmith shop. Established in 1910 and operated into the 1920's.
4. East side - Ole Thueson house. Evidence found in the walls of house show Thueson was a stone mason in 1876. In the early days it was a kind of boarding house, later changing hands many times. Alma A. Johnson, one of the first school teachers lived here.
5. West side - Wolff's Community Hall. Opened September 1906 with the Red Wing Stine Orchestra, a 40 x 60 hall, managed by Albert Stone, used for lodge, dancing, roller skating, plays, school exhibits, and public and private meetings. The 1912 Hilliard's Dance Band from St. Paul came to Hudson by train, brought by wagon to Afton, and was paid \$45 per night until midnight. About 100 men could buy tickets good for a man and his partner. Was torn down about 1920.
6. West side - Brown house. Now gone but built by Tilton, who ran the saw mill in Steamboat Park, 1857.



7. West side - Wolff's Saloon. It is now Lerk's Bar and Grill, moved to its present location in the mid-1920's. Like the Community Hall, it was built by Wolff's Brewery of Stillwater in the late 1880's, owned by Paul J. Gedatus and operated by "Long John" Nyquist.
8. East side - The house standing there now is the former Afton Methodist Church parsonage, which stood next to the Afton Methodist Church on old Highway 95 (County 18), 1893.
9. West side - Frank Spreeman house. Frank and his brother Bert Spreeman were commercial fishermen. House built in early 1880's by John W. Brown.

10. West side - Joseph Dernley house, built in 1859. He owned a greenhouse on the property and also rented out rooms. He was a Civil War veteran.
11. West side - A grocery store and home built by Charles Getchell in the early 1880's. It was also known as "the Slater store" since George Slater ran it in 1905 after Getchell built it. Store stood on the south side of the house.



12. East side - Selma's Ice Cream Parlour, purchased by Selma and Ed Holberg in 1913. Date of building early 1900's. Property on which parlour stands was the Civil War Arsenal and Drill Ground. In 1945, the northern addition to the building was the post office and later a small fishing gear store.
13. West side - Afton Village Park. There was a dance hall in the park prior to 1927. In the 1930's after the dance hall was torn down, a bandstand was erected. Bandstand was recently torn down and replaced by a gazebo. Platted 1855.



14. West side - Brick schoolhouse. It was built in 1876 for \$500. In use until 1903, now privately owned.



15. West side - Squires house. It was built in 1870 by Samuel Carnithan and then bought by Benjamin Perham Squires, a businessman.
16. East side - Chris Christensen Blacksmith Shop, 1896-1939. Torn down.



17. East side - Garage building. Built in 1917 by the Fred Johnson family. Operated as service station until the 1960's. Currently Afton's post office.

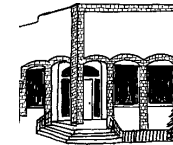
18. West side - Ferdinand Richert store. It was probably built in the late 1890's. The store is now gone, but the old ice house still stands to the rear of where the store was. Foundation of store still visible.



19. West side - Former Samuel J. Patterson Hotel, built in 1856 and burned in 1859. The present house on the site was the Ferdinand Richert house, built about 1890.



20. East side - The barber shop, which was moved from behind the Slater house by Herbert Sill about 1917. Between them, Herbert and Harold Sill ran the barber shop from 1917 into the 1970's.
21. East side - Lerk's Bar and Grill. See No. 7 above.



- 21A. East side - Brick bank building. It was built in 1913 by L.A. Bluff and operated as a bank until 1929. Later operated as a store.
- 21B. East side - Berry shed, 1880-1930. Extended from bank building to railroad track. Shed removed 1965.



22. East side - Cushing House - Afton House Inn. Built in 1867 and operated by different people. Mary Pennington ran it as a hotel from 1907 into the 1940's. The Cushing House was built around an older house owned by Miner Thomas in 1859.



23. West side - the Mackey House. Built in 1841. It was operated as the Afton Toy Shop, then as Baglio's until it burned in 1998. Rebuilt from original plan with second story added, and reopened as Baglio's.

24. West side - Sam Patterson General Store, north of the Mackey House. The Sam Patterson store operated from 1867 to 1880.



25. West side - Thomas house. This residence was built by William Thomas in 1857. The blacksmith shop which was between his house and the Mackey house was also built by William Thomas.

26. East side - Meredith Thomas house and store. It was built in 1859. Thomas was the first merchant in Afton. Burned in the 1980's.



27. West side - the Congregational Church Parsonage. It was built in 1859 by the Reverend Putnam. It was used for village meetings and a school and later as a parsonage.

- 27A. Buswell house, 1870, moved. Now located at 15872 32nd St.

28. East side - Octagon House. Built by Meredith Thomas in 1855 and torn down in 1944.

29. East side - north of the Octagon House was the Spreeman's Fish Market, a very small structure with a screened porch with the picture of a fish painted on the screen. It was torn down in 1944.



30. East side - Museum. It was built as the Congregational Church in 1868. It became the American Methodist Church in 1904-1926 and the Afton Village Hall from circa 1926-1982.

31. West side - Fred Pechuman house. Built in 1884. Dr. Burfiend, Afton's doctor, lived here at one time.

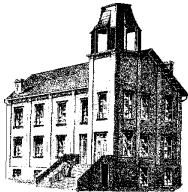


31A. Swedish Methodist Church, 1886-1966. Burned 1998.

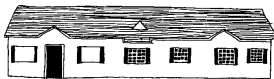


31B. Swedish Lutheran Church, 1882. Name changed to Memorial Lutheran Church in 1932. Torn down in 1996.

32. East side - Professor Ahl (of the Academy) lived in this house in 1885, followed by J. B. Carlson, Albin & Minne (Lind) Carlson, L.K. Johnson.



33. West side - St. Croix Valley Academy. This building was an academy from 1868 to 1884. It became a seminary of the Evangelical Lutheran Joint Synod of Ohio between 1884 and 1893. Finally, it served as the Afton Public School from 1894 to 1952.



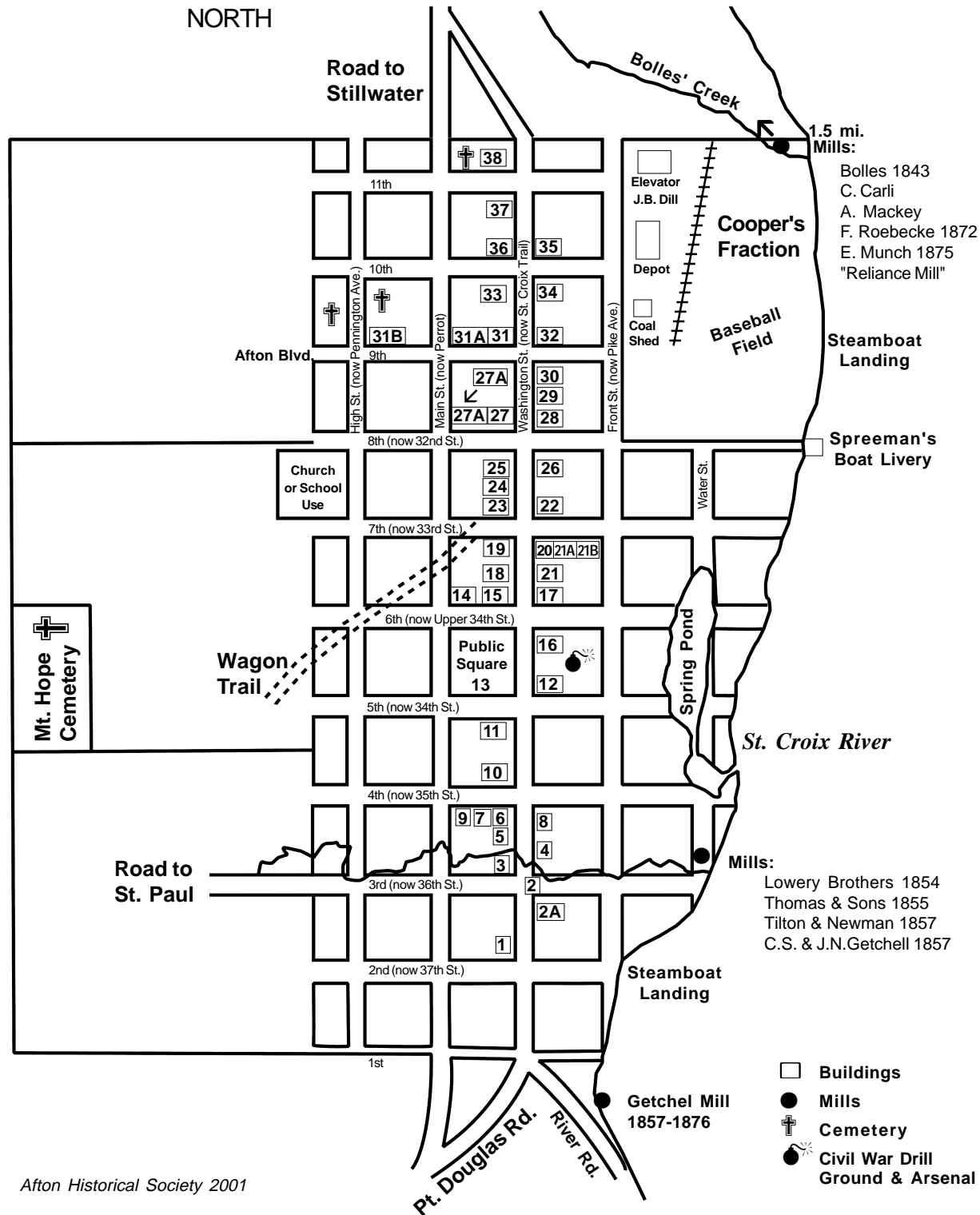
34. East side - Inter-state Lumber Company. We think it was built mid-1940's and may be the third lumber yard to occupy this location.

35. East side - Martin Lind house. Built in 1890.

36. West side - James Johnson lived here in early 1900's.

37. West side - St. Paulus German Lutheran Church, circa 1880's. It was torn down and lumber salvaged in 1947.

38. West side - This house was the parsonage for the St. Paulus German Lutheran Church. The house was built by Mr. Ellmann. Behind the house is the St. Paulus German Lutheran Cemetery. 1880's.



Afton Historical Society 2001

# Historic AFTON Walking Tour



The historic village of Afton is nestled between wooded river bluffs and a protected scenic river, the lovely St. Croix.

Some call Afton "nostalgic, friendly, and quaintly charming." Visitors in the mid-1800's were reminded of Robert Burns' poem "Afton Water" and thence came its name.

Following French fur traders to the St. Croix Valley, New Englanders platted the Village in 1855, and influenced its simple, straightforward architecture.

Clear drinking water still flows from the springs shown on the early plats. Some of the virgin pines still stand in its deep ravines. Wild flowers, deer, flying geese, and songbirds thrive here, along with wild berry bushes left from Afton's early berry industry.

Today, in the center of a quiet residential community, is a small business district of restaurants, marinas, a few unique shops and services. Surrounding the village are farms, parks, and nature preserves.

Most of the village businesses are located in 19th century houses or buildings, some of which are still being restored.

We hope you will enjoy exploring Afton and discovering what it has to offer. This guide does not attempt to list all the historic sites and points of interest. We will be happy to answer your questions and to help make your visit pleasant.

**AFTON HISTORICAL SOCIETY**  
 3165 St. Croix Tr. So., P.O. Box 178  
 Afton, Minnesota 55001  
 (651) 436-3500

e-mail: [scriv@presenter.com](mailto:scriv@presenter.com)

[www.presenter.com/~aftnhist](http://www.presenter.com/~aftnhist)